

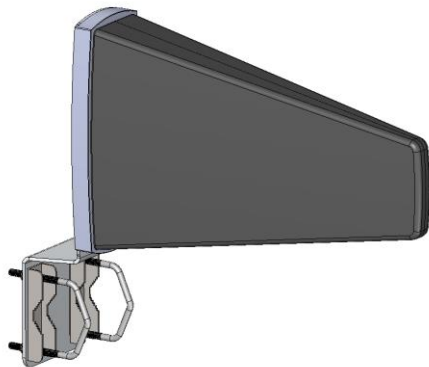
# Ultra-Wideband Log Periodic Antenna

800 – 8000 MHz

Product Code: LPDA-A0081

VERSION: 1.11

## SPECIFICATIONS:



<b>Electrical:</b>	
Frequency range	800 – 8000 MHz Up to 8500 MHz (receive only)
VSWR	< 2.0:1 (for 800-8000 MHz only)
Nominal input impedance	50 Ω
Connector	N-type female
Feed power handling	50 W (for 800-8000 MHz only)
Gain (typical)	7 dBi (for 800-8000 MHz only)
Azimuth 3 dB beamwidth	70° typical
Elevation beamwidth	60° typical
Polarisation	Linear (vertical or horizontal)
<b>Mechanical:</b>	
Dimensions (l x w x h)	380 mm x 320 mm x 90 mm
Total mass	< 1000 g (excluding bracket)
Mounting	Pole or wall-mount
MTBF	150,000 h
<b>Environmental: designed to meet the following specifications</b>	
Temperature	- 40 °C to +70 °C
Qualification	Design to comply with applicable parts of MIL-STD-810E
Weatherproofing	For outdoor use
Exposed materials	Plastic and passivated aluminium
Wind survival/operation	200 km/h

## PRODUCT FEATURES:

- Wideband
- Covers various international cellular and ISM bands
- Compact and suitable for indoor and outdoor applications

## APPLICATIONS:

- Wideband monitoring applications
- Communications

## PRODUCT DESCRIPTION:

The LPDA-A0081 medium gain ultra-wideband directional log-periodic dipole antenna (LPDA) array covers 800 to 8000 MHz under a compact radome.

The LPDA-A0081 could be used for receive only purposes up to 8.5 GHz with slightly reduced performance in VSWR and gain.

# Ultra-Wideband Log Periodic Antenna

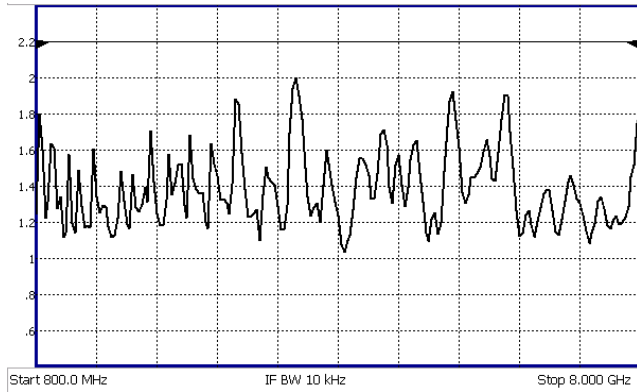
800 – 8000 MHz

Product Code: LPDA-A0081

VERSION: 1.11

## VSWR AND GAIN GRAPHS:

MEASURED VSWR:



MEASURED GAIN:

